



# KPC Advisory & Evaluation Services LLP

*Ways to Save.....*





# Who are we?



KPC Advisory & Evaluation Services LLP has been in the business of insurance for 30 years. We cover the entire range of insurance products under one roof dealing with all government and private insurers. We have a perfect track record of full claim settlement of all our claims. This has been possible due to our end-view approach to paperwork, facilitating expeditious claim settlement. The goodwill we have garnered over the years with both clients and insurers bears testimony to that.



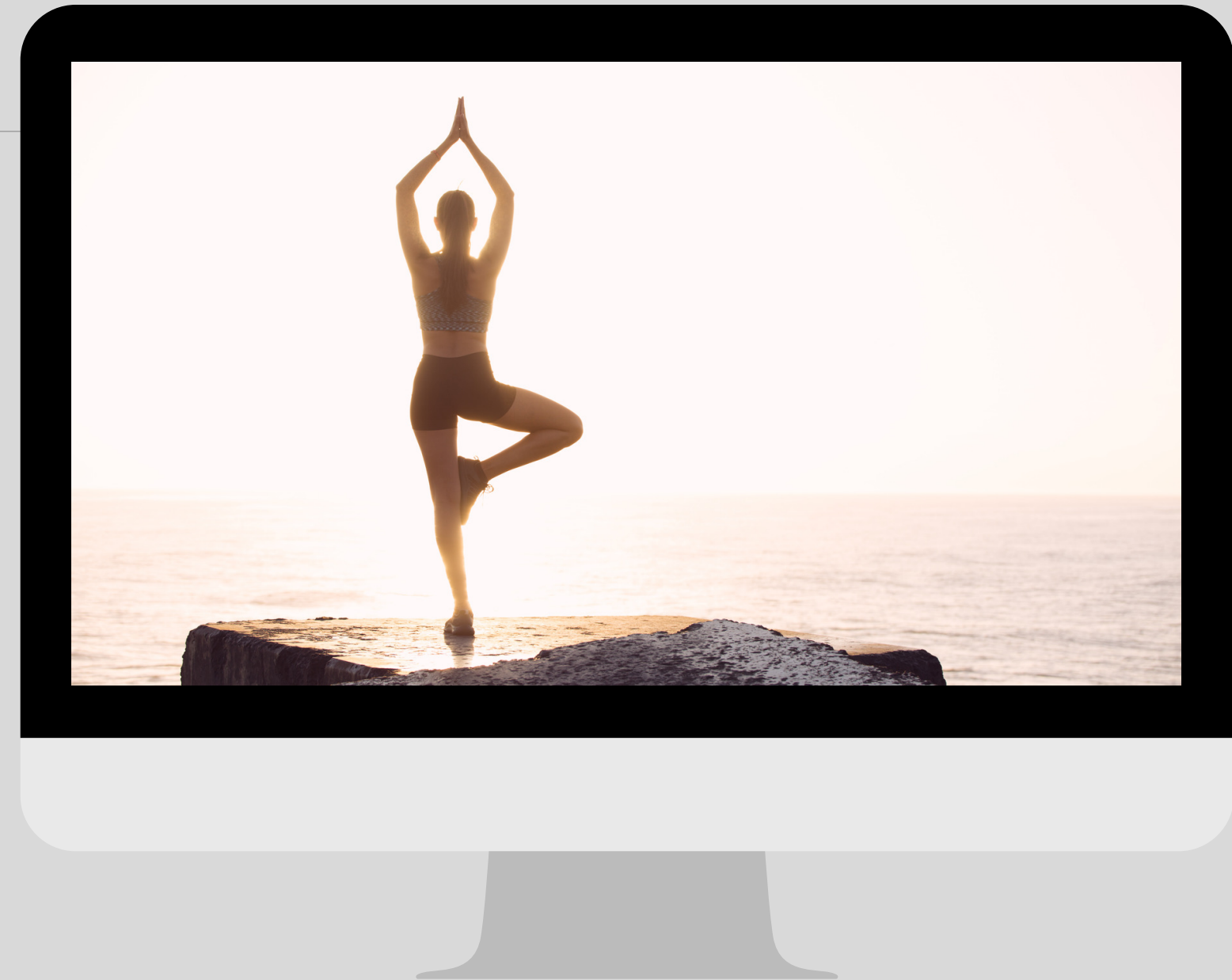
# Our basket of products





# Health Insurance

1. Retail health insurance includes hospitalization cover, critical illness cover, personal accident cover, top-up cover, travel health insurance cover.
2. Group medical cover (GMC) includes medical cover for employees and families. It is available at the corporate level under employer-employee plan.
3. Workmen's Compensation which has to be mandatorily provided by employer to employee for any mishap arising in the course of employment







# Life Insurance

1. Term Insurance - Short and long term life cover which provides cover for life and can be offered as a legacy planning.
2. Wealth Creation Solutions - Personalised retirement and wealth creation planning







# General Insurance

Insurance products like vehicle insurance, marine insurance, fire insurance, office protection insurance, indemnity insurance, property insurance are also offered in our basket.

Eligible tax benefits can be availed under respective sections of the Income Tax Act, 1961.





# Our Team

**Our promoters are Mrs. Duru R Lalvani and Mrs. Bishakha Chatterjee.**



Mrs. Lalvani is associated with the insurance sector since 1992. Previously she has worked as the head of Imports and Claims department with MERZARIO shipping agency, having a total claim experience of 35 years. She is currently undergoing MBA in Insurance



Mrs. Bishakha Chatterjee has huge experience in the financial sector, especially in the equity market, and has worked with the Stock Holding Corporation. She has MBA in finance.





# Our Aim



KPC conducts risk profile evaluation for individuals to enable them to find the gap to ensure smooth maintenance of the family's standard of living by helping them cover their RISK, realize their DREAMS, and thereby leave a legacy for generations to come.

We provide hand-holding assistance in recycling financial resources to optimize value for money.

KPC helps people find WAYS TO SAVE for their fund requirements at various stages of life. We evaluate the Income (input) with the expense (output) ratio in context with clients Insurance - Investment portfolio in an unbiased manner to "FIND THE GAP" which can be bridged systematically to sustain their LIFESTYLE. We, COUNSEL, EDUCATE, and SPREAD THE MESSAGE: MICRO-SPENDING for ACHIEVING MACRO-SAVINGS: the only route available for safeguarding lifestyle in the unforeseen uncertainties





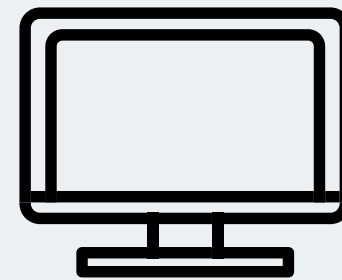
*Our 800  
customers  
thank us!*



| Contact us

**KPC is here to help  
you with care.**

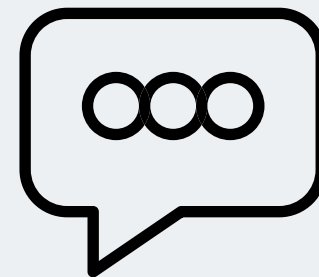
**Assuring you of our  
best services**



[www.kpcevaluation.com](http://www.kpcevaluation.com)



9821341581/  
9820449788



[kpcaesdb@gmail.com](mailto:kpcaesdb@gmail.com)